

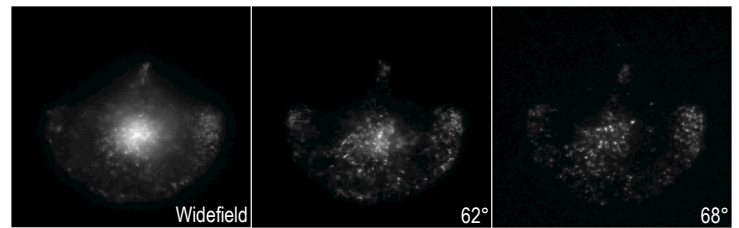
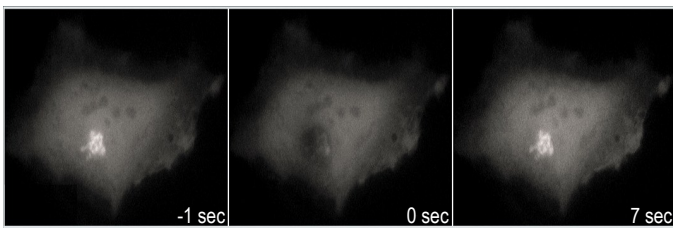
*iLas*²

Targeted Laser Illuminator



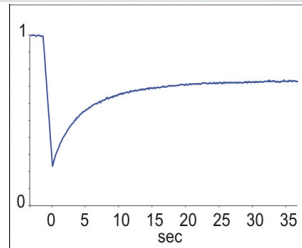
ROPER SCIENTIFIC

The **iLas²** is a unique optical system for real-time control of laser illumination. It is compatible with equipment from **Leica, Olympus, Nikon, Zeiss, Yokogawa, and ASI**. With seamless integration in **MetaMorph** software, it can perform a variety of targeted laser experiments.



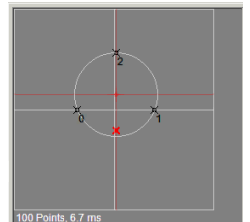
FRAP

- Ablation
- Photoactivation
- High speed scanning: 20,000 points/second
- Diffraction limited laser positioning
- Simple auto-calibration algorithm
- Streaming capabilities with pre-programmed or on-the-fly-experiments



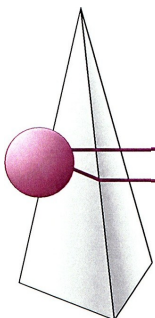
360° TIRF

- Multi-wavelength
- Full revolution scanning
- Unmatched illumination uniformity
- Instantaneous switching between widefield, darkfield, and TIRF imaging
- 350-650nm light range
- Independent control of multiple lasers with wavelength penetration adaptation



For more information contact:

BioVision Technologies



www.biovis.com/ilas

Phone: (610) 524-9740 Email: info@biovis.com

64 East Uwchlan Ave. #273, Exton, PA 19341