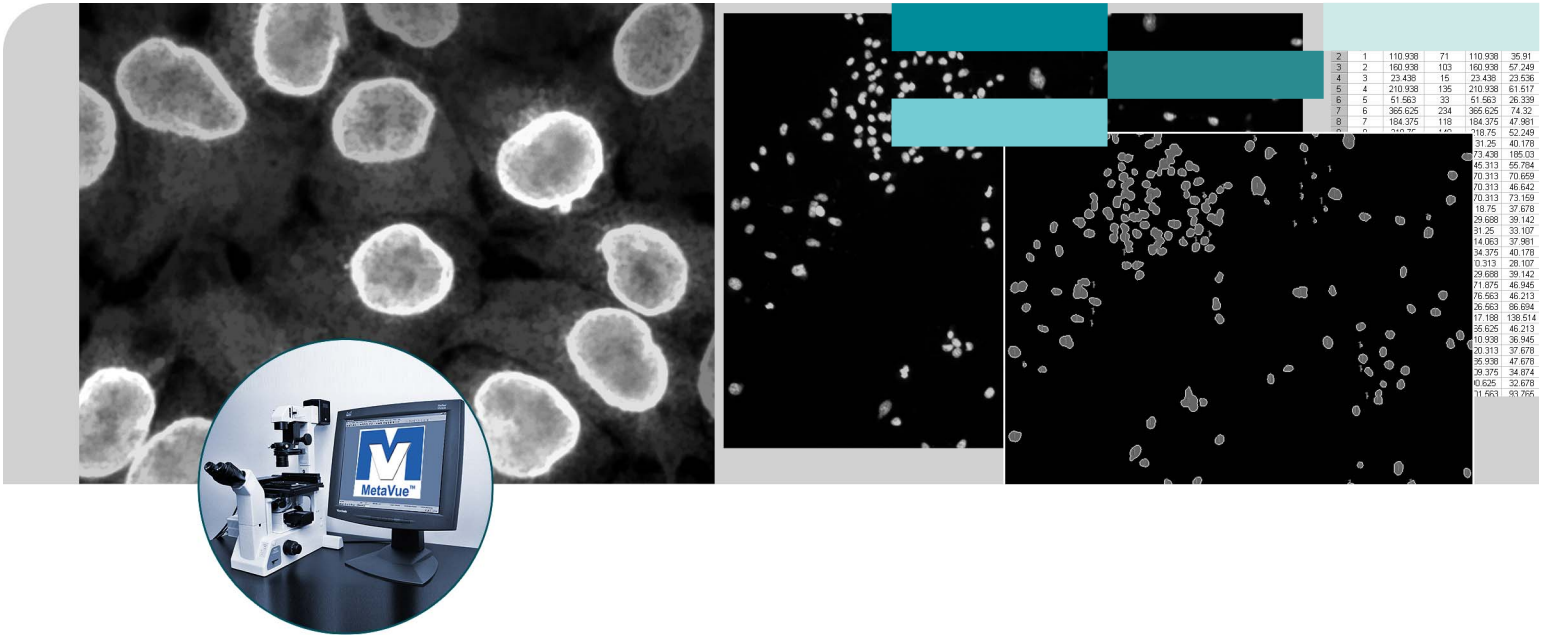


the MetaVue™ system

COST-EFFECTIVE INTEGRATED SYSTEM FOR BIOIMAGING



→ DIGITAL PHOTOGRAPHY

→ CELL COUNT

→ FLUORESCENCE

→ IMAGE PROCESSING

→ IMAGE ANALYSIS

The MetaVue™ Imaging System is the cost-effective solution for basic imaging applications such as digital photography, multi-wavelength fluorescence, image processing and image analysis.

MetaVue is a simple, easy-to-use system for acquiring and processing images, performing graphics functions, and archiving and retrieving images.

ACQUISITION

For multi-mode microscopy, MetaVue is able to acquire multiple fluorescence wavelengths combined with a transmitted light image.

Images can be stacked into one file and saved as a Stack file format, then processed or measured all at once in one easy step.

With the MetaVue system's modular architecture, expanding the software is simple and allows the system to grow as your imaging needs change.

Compatibility with MetaMorph® and MetaFluor® offers a well-defined upgrade path.

acquisition with MetaVue

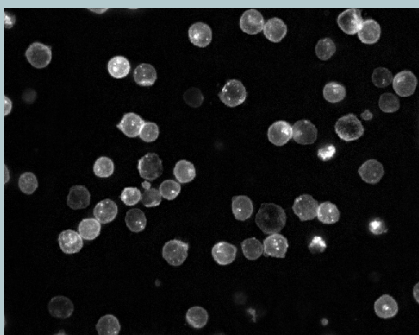
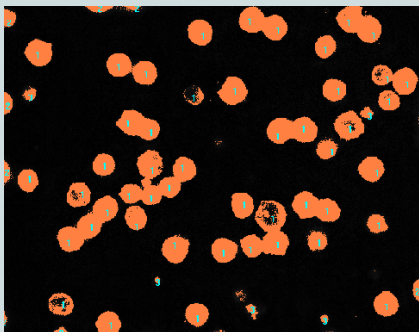


image analysis



data export to text file or spreadsheet

	A	B	C	D	E
1	Image Name	X	Y	Class	Pixel Value
2	tophateafter	53	74	Class 1	1945
3	tophateafter	178	93	Class 1	6843
4	tophateafter	221	104	Class 1	3240
5	tophateafter	192	180	Class 1	3838
6	tophateafter	309	45	Class 1	3916
7	tophateafter	381	22	Class 1	4379
8	tophateafter	425	36	Class 1	2789
9	tophateafter	534	24	Class 1	2007
10	tophateafter	573	44	Class 1	4086
11	tophateafter	498	66	Class 1	1677
12	tophateafter	518	130	Class 1	5060
13	tophateafter	464	189	Class 1	1965
14	tophateafter	424	200	Class 1	2544
15	tophateafter	358	130	Class 1	1836
16	tophateafter	101	365	Class 1	5219
17	tophateafter	40	266	Class 1	3893
18	tophateafter	122	290	Class 1	1181
19	tophateafter	156	246	Class 1	4527
20	tophateafter	161	318	Class 1	3134
21	tophateafter	136	341	Class 1	5796

COMPUTER REQUIREMENTS

- Intel® Pentium-4 processor or later
- Microsoft® Windows® XP
- CD-ROM drive
- 512MB or more system memory (RAM)
(more memory may be required for processing large image data sets)
- 200MB free hard disk space for program only
(image storage requires more space)
- 24-bit graphics display

STANDARD FEATURES

- Binary, 8- 16-, 24- and 48-bit (RGB) image and stack display and processing including arithmetic operations, shading correction and background subtraction
- Binary image morphology operators
- Color combine and color separate 24- or 48-bit images
- Regions of interest tools
- Auto-expose from digital cameras
- Image annotation
- QuickTime® or AVI formats for the creation of movies
- Image histogram
- Customizable toolbars and windows
- Data logging to text file or spreadsheet programs such as Microsoft Excel®
- Automation through journals and taskbars

ACQUISITION OPTIONS

- Digital CCD cameras, both monochrome and color, including: cooled, full frame, frame transfer, interline, back thinned, intensified and on-chip multiplication gain from major manufacturers
- Video cameras, both monochrome and color, including: RS-170, CCIR, on-chip integration, intensified, CCD and tube from major manufacturers

OPTIONAL FEATURES

- Morphometry analysis
- Brightness measurements
- Image overlays

SUPPORT

- Technical support via phone, e-mail or online at support.universal-imaging.com
- Electronic documentation

FOR MORE INFORMATION

For complete details of features and options, consult our website at www.moleculardevices.com

SALES OFFICES

→ USA +1-610-873-5610
Consult our website for a current listing of our worldwide distributors at www.moleculardevices.com

MetaVue is a trademark of Molecular Devices. All other trademarks are the property of their respective owners.

