

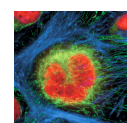
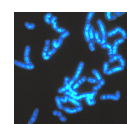
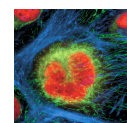
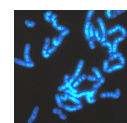
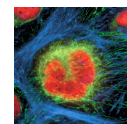


Imaging is NOT just a
black and white issue.



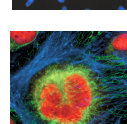
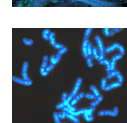
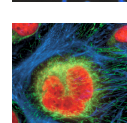
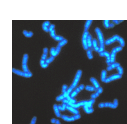
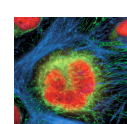
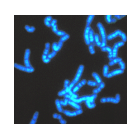
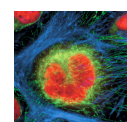
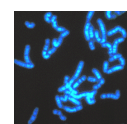
Dual-View™/Quad-View™ for fluorescence imaging

- Whether your application requires complex ratio imaging or simple multi-color imaging.....
- The **Dual-View™** and **Quad-View™** systems have been designed to meet your needs.
- When coupled to a microscope, these systems provide true simultaneous imaging of multiple fluorophores.
- Since there is no time delay between the acquired images, this novel system is well suited to biological imaging applications where cell motion or rapid photobleaching is problematic.



High Performance Multiple Image Acquisition.....

- Simultaneous acquisition of 2 to 4 fluorescence emission images in a single snapshot
- Easily mounted to any microscope and CCD
- Uses standard 25 mm diameter emission and polarization filters
- Removable filter cube makes configuration for different experiments a snap
- Pass-Thru* option means you can leave system in place for full field-of-view imaging
- Precision optical and mechanical design allows for sub-pixel image registration and minimizes light loss



.....Opens Up New Possibilities

- Real-time dual-color imaging
- CFP/YFP and GFP/RFP Fluorescent Resonance Energy Transfer (FRET) imaging
- Calcium imaging with Fluo3/Fura Red or dual emission Indo-1 imaging
- Simultaneous Calcium/pH imaging w/Fura-2 and BCECF
- Fluorescence polarization/anisotropy imaging
- Simultaneous fluorescence/DIC imaging
- Drug discovery with Cy3/Cy5
- Single Molecule Fluorescence (SMF)
- pH imaging with SNARF
- Multi-wavelength TIRF
- Multi-wavelength FLIM
- Voltage sensing
- pH Imaging with SNARF
- FISH
- Cyclic AMP

Product Specifications

Specification	Dual-View™ (MSMI-DV-FC) Quad-View™ (MSMI-QV-FC)	
Detector Array Options		
Attachment Thread	C-Mount (male)	F-Mount (male)
Max Diagonal Dimension*	16 mm	16 mm
Front Attachment Options		
	C-Mount (female)	
	F-Mount (female) using F-to-C adaptor	
Wavelength Sensitivity	350 nm to 2.2 µm	
F-number per image	Microscope dependent	
Efficiency per Image**	88 – 92% (Dual-View™) 70 – 92% (Quad-View™)	
Image-to-Image Registration	Subpixel	
Weight	1.7 lbs	
Dimensions	2.5" x 7.5"	
Operating temperature	-10° C to 50° C	
External mounting option	¼-20 tapped hole on bottom	
Filters		
Maximum diameter	1 inch (25.4 mm)	
Maximum thickness	0.39 inches (10 mm)	
Type	Emission/barrier, neutral density, polarization	

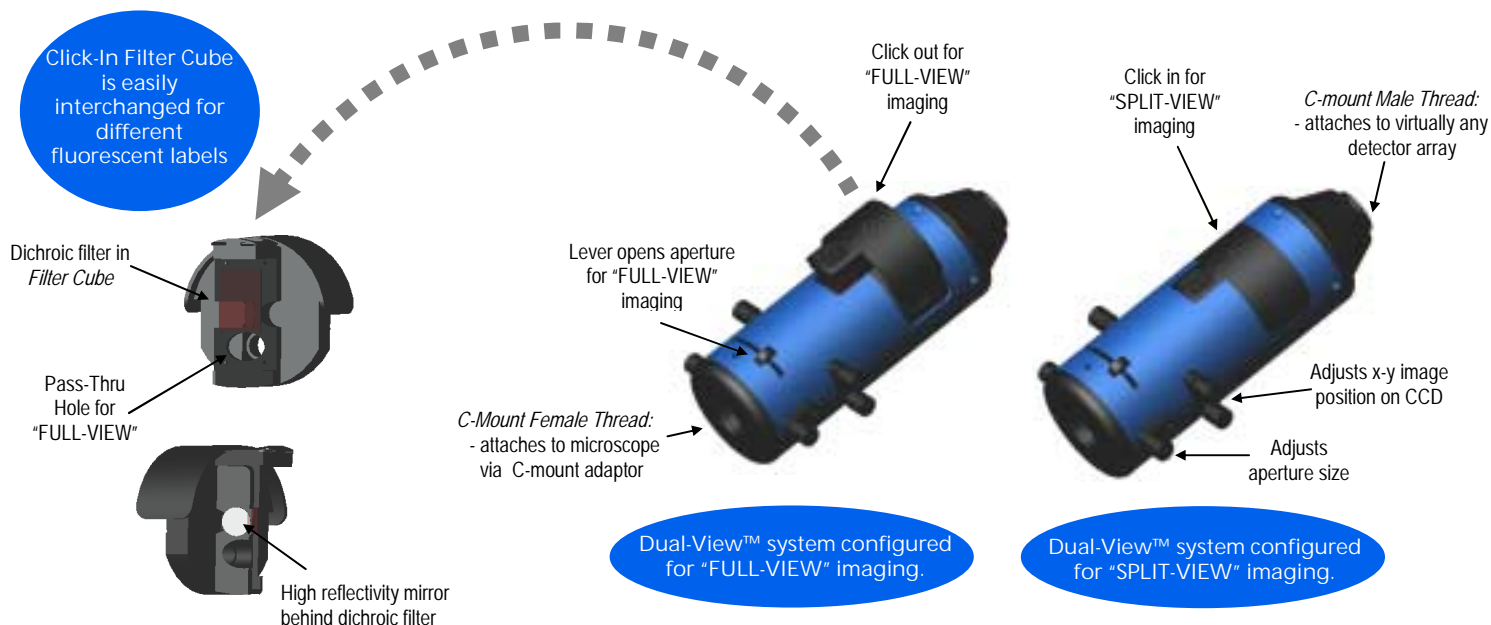
Optical Insights, LLC reserves the right to change specifications without notice.

* Without experiencing measurable distortion.

** Transmission values also modified by filter transmission.

US Patents: 5,926,283 & 5,982,497
Australian patent: 731,476
Other Foreign Patents Pending

Anodized aluminum
finish on all parts



Imaging is NOT just a
black and white issue.

Optical Insights, LLC

1807 2nd Street • Suite #100 • Santa Fe • New Mexico • 87505 • USA
Phone: 505-955-1585 • E-Fax: 508-526-5660 • Toll-Free Phone: 1-877-4-OPT-INS (467-8467)
E-mail: info@optical-insights.com

www.optical-insights.com